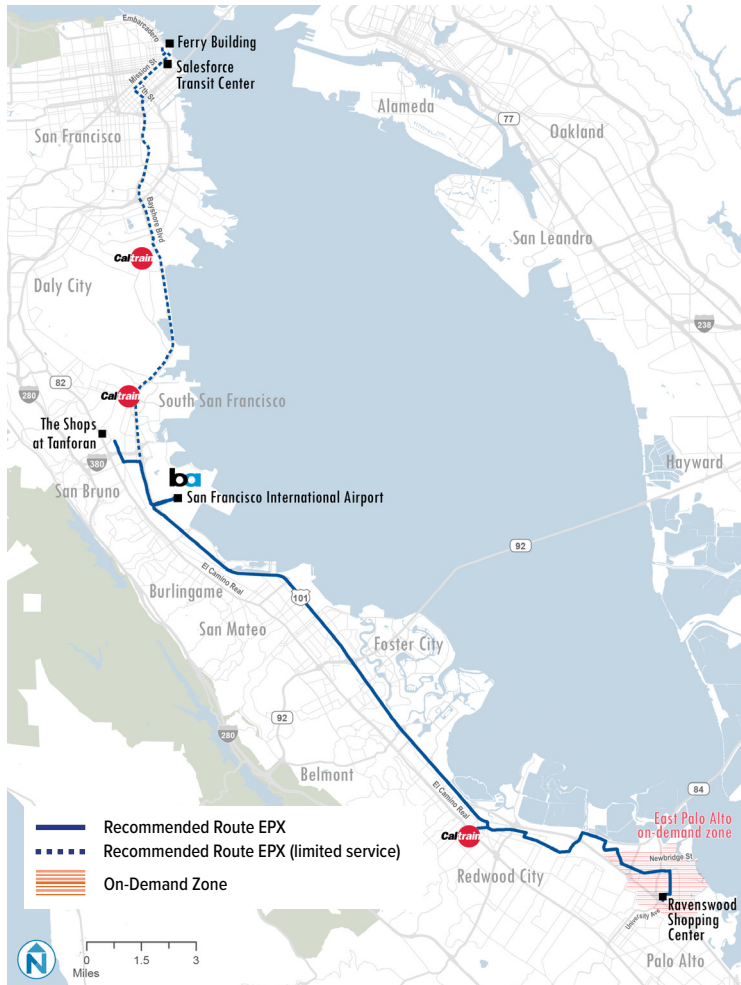


Route EPX

East Palo Alto — Redwood City — SFO — San Bruno BART



Hours of Service

	Weekday	Saturday	Sunday
Existing	—	—	—
Recommended	5:00 AM-9:30 AM, 2:30 PM-7:30 PM	—	—

Service Change Description

Coverage (Where it goes)

Route EPX would be a new limited-stop route connecting East Palo Alto and Redwood City to San Francisco International Airport. Some trips will terminate in the northern end at San Bruno BART Station, while some limited service may be provided on this route to downtown San Francisco. This route was identified in the US-101 Express Bus Feasibility Study and replace some connections currently offered by SamTrans Route 398 (SamTrans, November 2018).

Frequency (How often it runs)

Route EPX will operate every 60 minutes during peak hours.

Hours of Service (When it runs)

Route EPX will run during peak periods on weekdays.

Recommended Frequency

	Day	Peak (minutes) (6-9am, 3-7pm)	Midday (minutes) (9am-3pm)	Evening (minutes) (7pm-12am)
Existing	Weekday	—	—	—
	Saturday	—	—	—
	Sunday	—	—	—
Recommended	Weekday	60	—	—
	Saturday	—	—	—
	Sunday	—	—	—